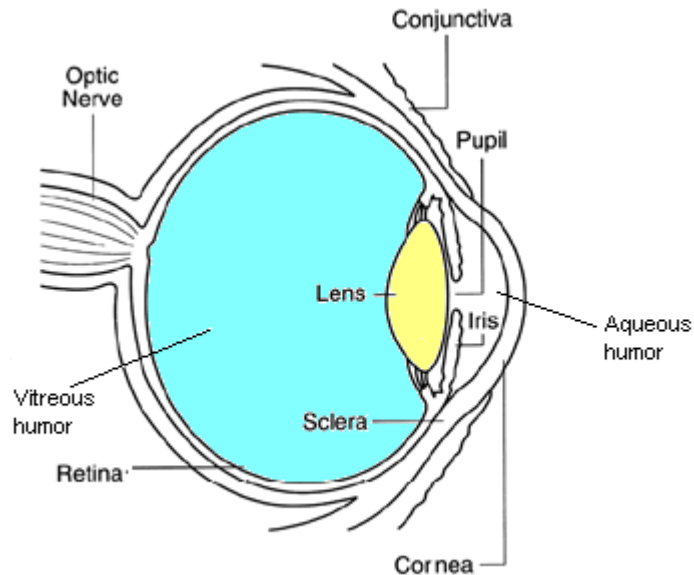


THE EYE

The diagram shows the basic anatomy of the human eye:



Cornea: the transparent part at the front of the eye that refracts light entering the eye onto the lens.

Lens: a transparent structure behind the pupil that refracts incoming light and focuses it on the retina. The lens is able to change shape in order to improve the focus.

Iris: This is the coloured part of the eye that controls the amount of light that enters the eye, it is able to constrict and dilate in order to control the size of the pupil depending on the light intensity.

Sclera: the outer white part of the eye that protects the inner structures.

Retina: this is the light sensitive layer inside the eye that contains light sensitive photoreceptive cells called rods and cones. These cells change light into sight by converting light into electrical impulses. These electrical messages are sent from the retina to the brain and interpreted as images.

Optic nerve: this leaves the eye at the optic disk and transfers all the visual information to the brain.

Conjunctiva: a transparent vascular membrane that lines the inside of the eyelids and extends over the front of the white part of the eye (the sclera).

Aqueous humour: this fluid circulates the front part of the eye, it provides nourishment and helps to maintain the eye pressure.

Vitreous humour: the clear gel in the centre of the eye that helps the eye to maintain its spherical shape.

<https://www.chm.bris.ac.uk/webprojects2002/upton/eye.htm>

I. Match the words (1-9) with their pronunciation (A-I).

- | | |
|--------------------|--------------------------|
| 1. conjunctiva | A. /'sklɪərə/ |
| 2. retina | B. /'kɔ:nɪə/ |
| 3. iris | C. /,kɒndʒʌŋk'taɪvə/ |
| 4. lens | D. /'retɪnə/ |
| 5. sclera | E. /'pju:pɪl/ |
| 6. aqueous humour | F. /lenz/ |
| 7. vitreous humour | G. /'aɪərɪs/ |
| 8. cornea | H. /,eɪkwɪəs 'hju:mə/ |
| 9. pupil | I. /,vɪt.rɪ.əs 'hju:.mə/ |

II. Write English translations for the following parts of the eye:

1. rogówka-
2. siatkówka-
3. źrenica-
4. spojówka-
5. tęczówka-
6. twardówka -
7. soczewka-
8. ciało szkliste-
9. ciecz wodnista-
10. nerw wzrokowy-

III. Read the text below the diagram and answer the question: Which part of the eye...?

1. is the coloured one
2. nourishes the eye
3. transfers the visual information to the brain
4. protects the inner structures
5. lines the inside of the eyelids
6. contains photoreceptive cells – cones and rods
7. refracts light entering the eye towards the lens
8. focuses light on the retina
9. helps to maintain the eye pressure
10. helps to maintain its spherical shape

IV. Complete the table.

Part of the eye	Function
iris	controls the amount of light that enters the eye



Ćwiczenia na licencji Creative Commons
mgr Marzena Gorczyca-Blok