

Drawing as an art form

Prepared by:

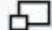
Joanna Burlikowska 5th year of Graphic

2022/2023

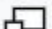
Institute of Fine Arts at the University
of Rzeszow

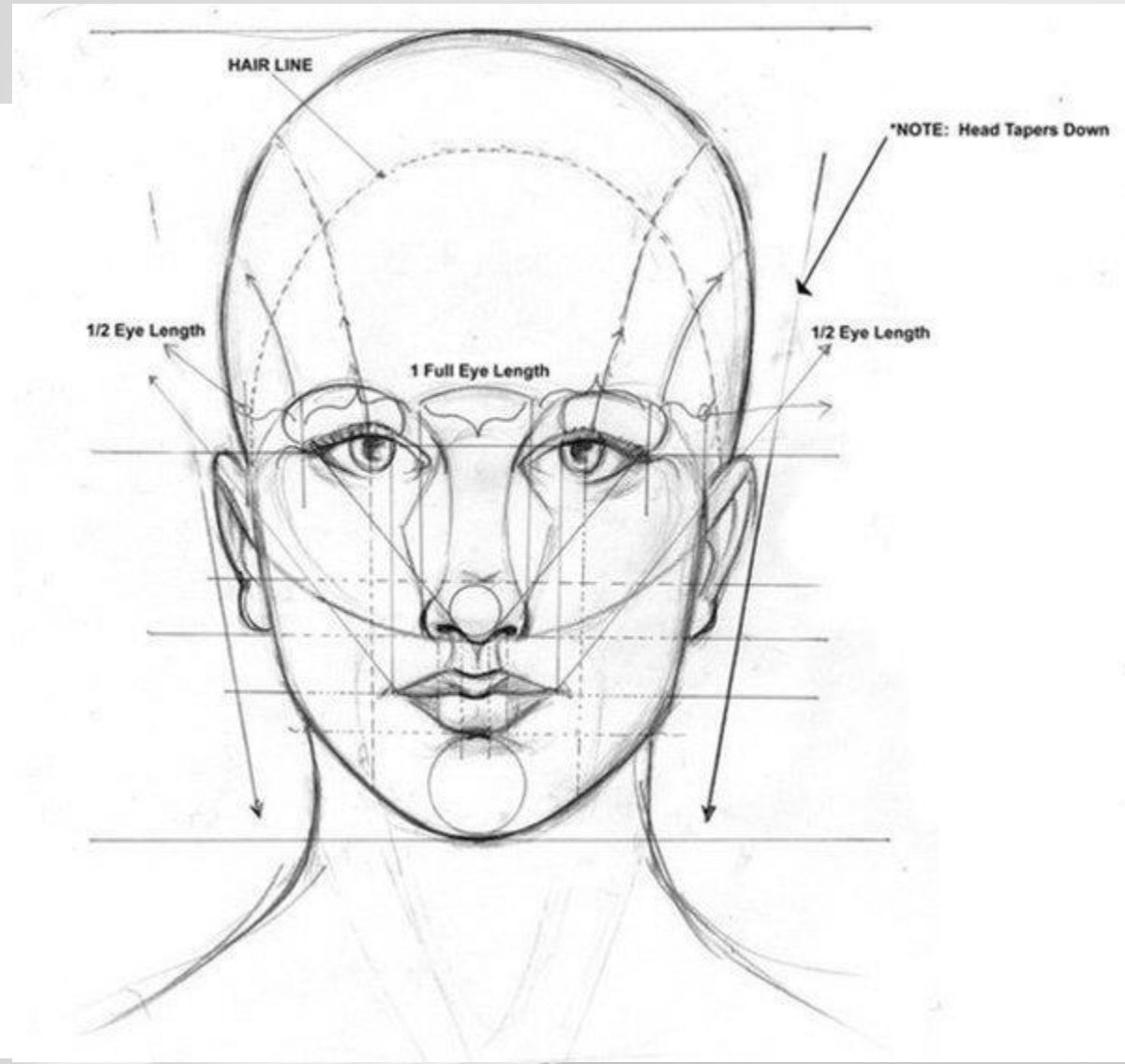
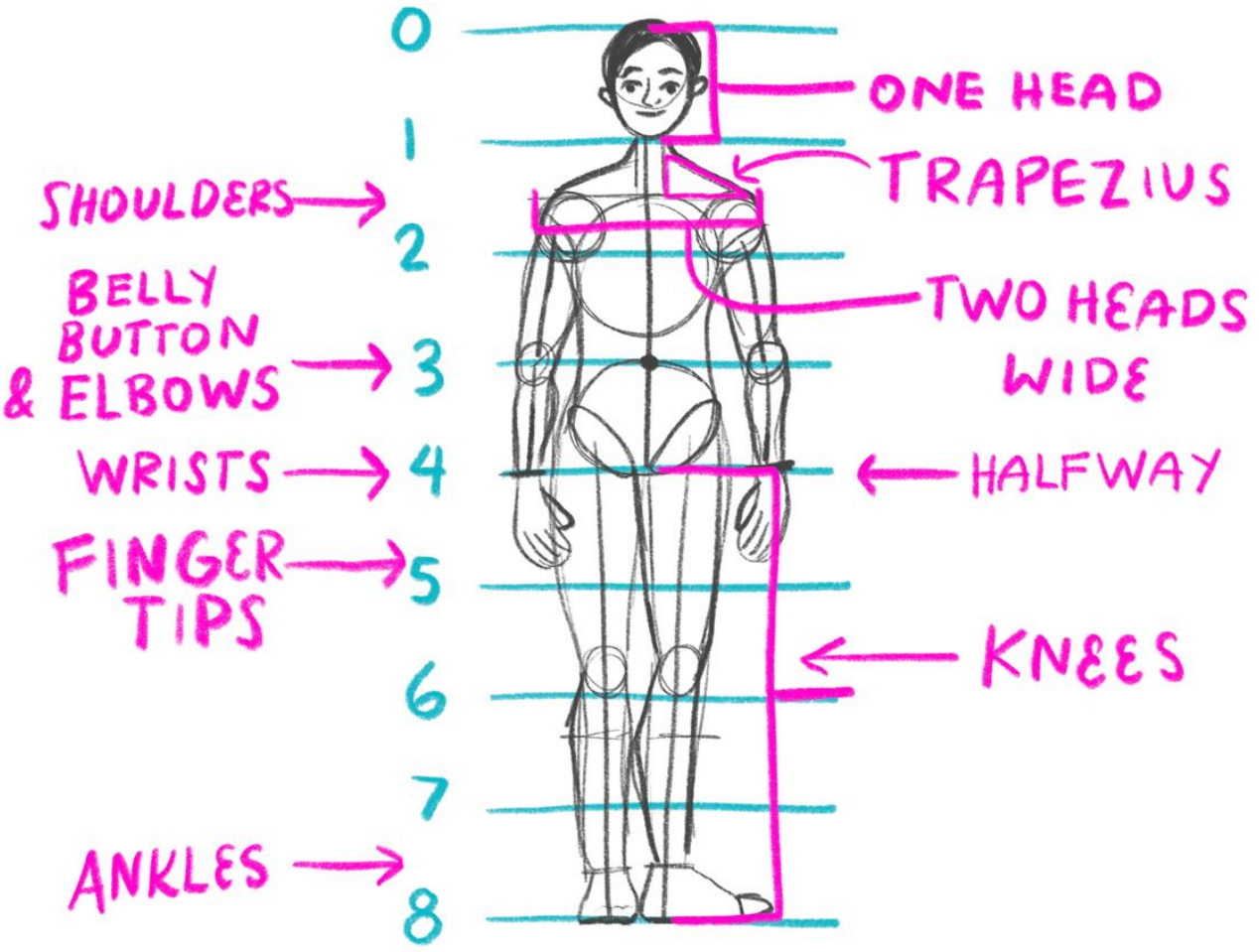


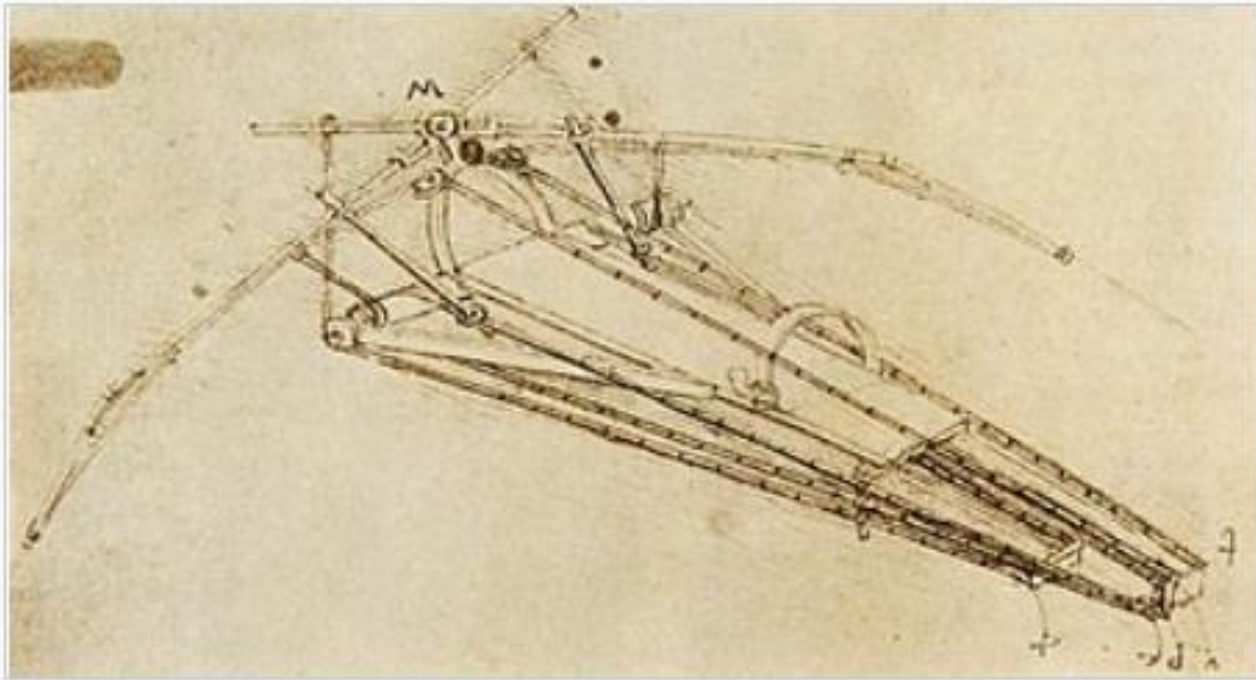


An artist drawing a figure from worm's-eye perspective 

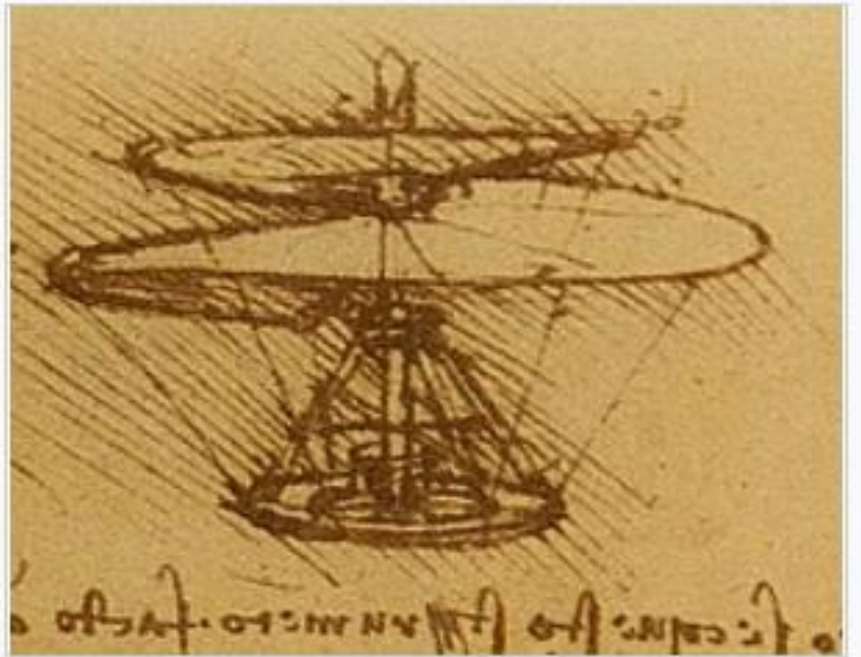


A young woman drawing the Barberini Faun in Munich 

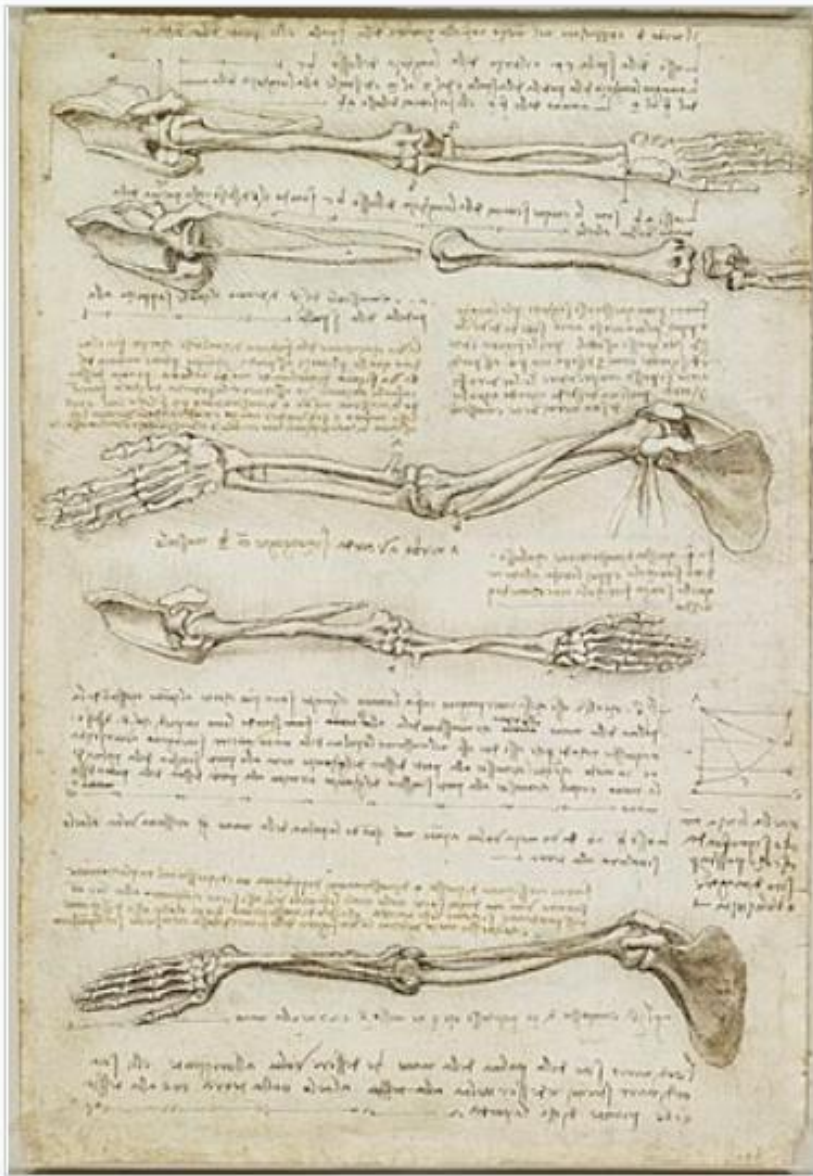




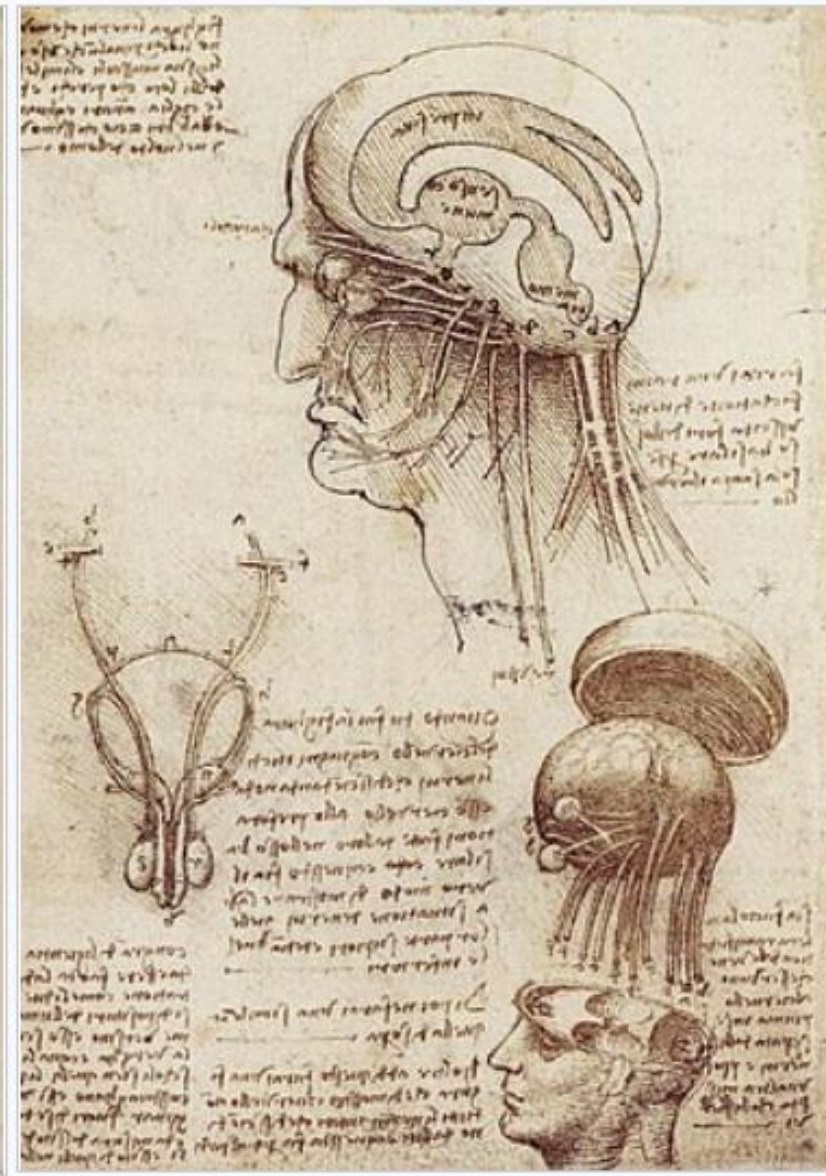
A design for a flying machine (c. 1488), first presented in the *Codex on the Flight of Birds*



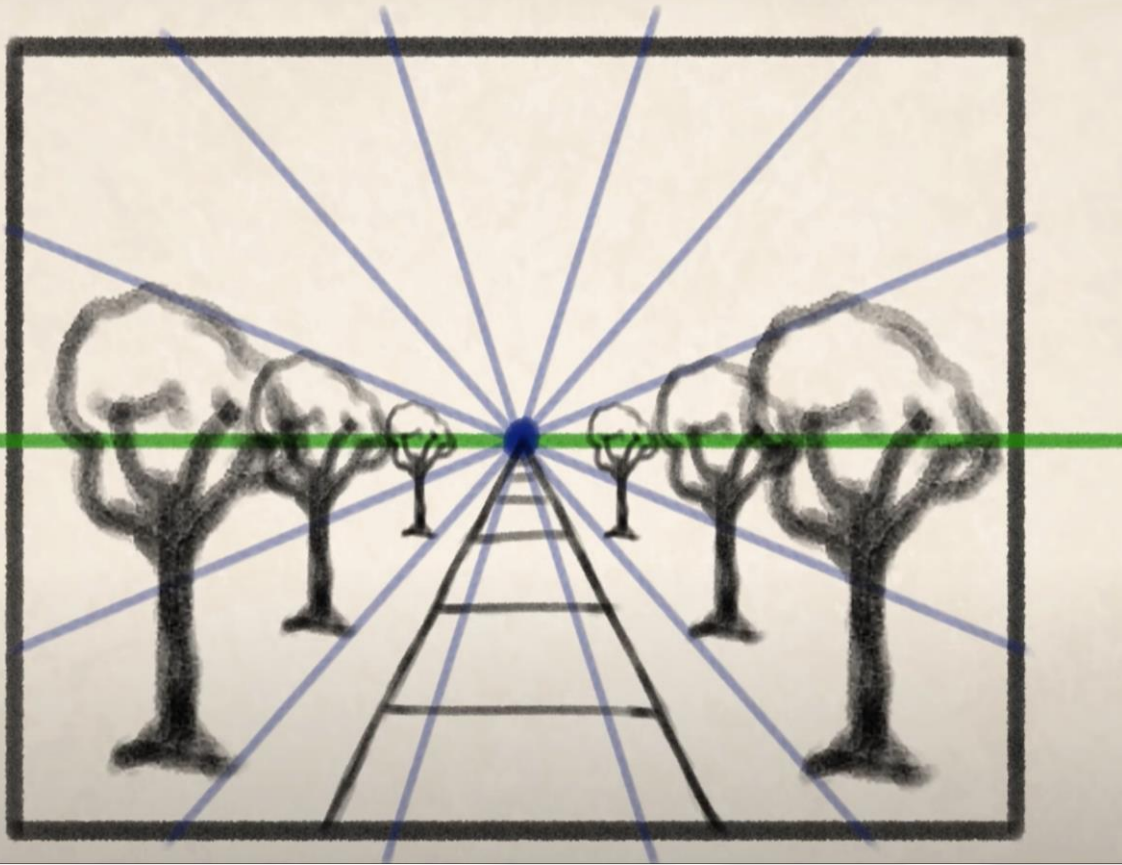
An aerial screw (c. 1489), suggestive of a helicopter, from the *Codex Atlanticus*



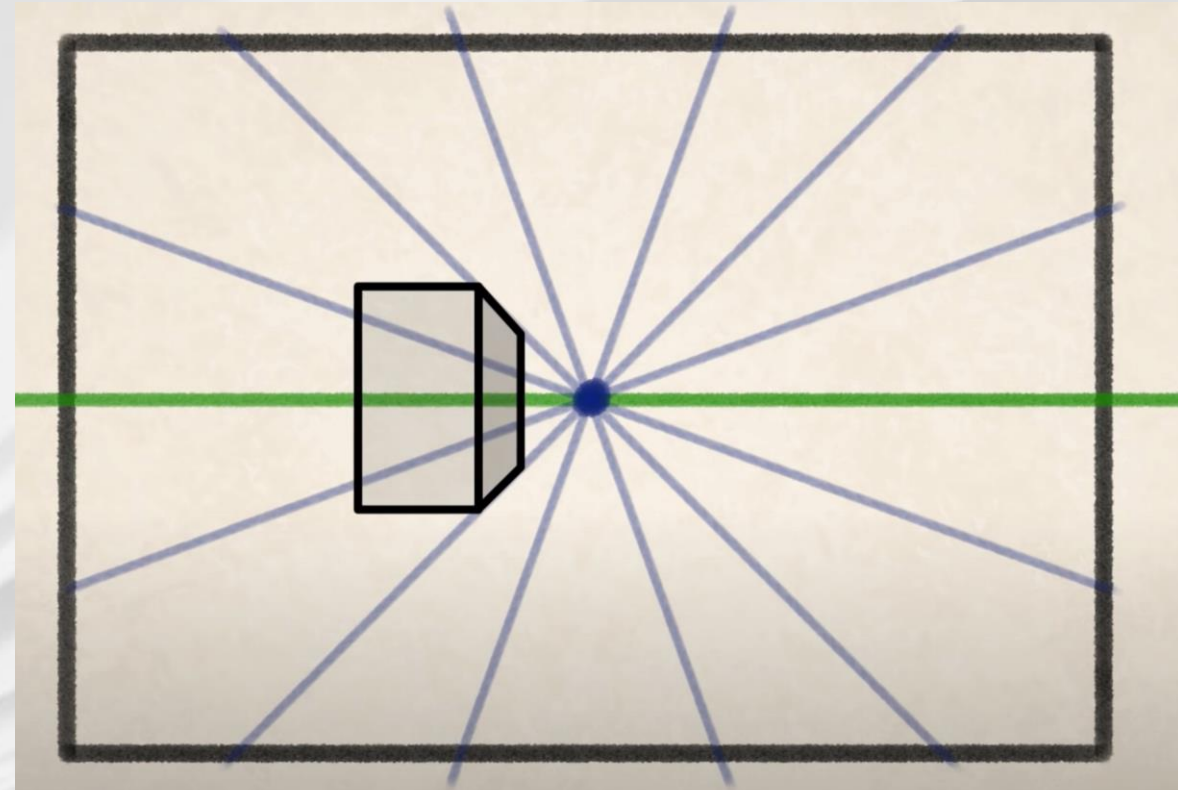
Anatomical study of the arm
(c. 1510)



Leonardo's physiological sketch of
the human brain and skull (c. 1510)

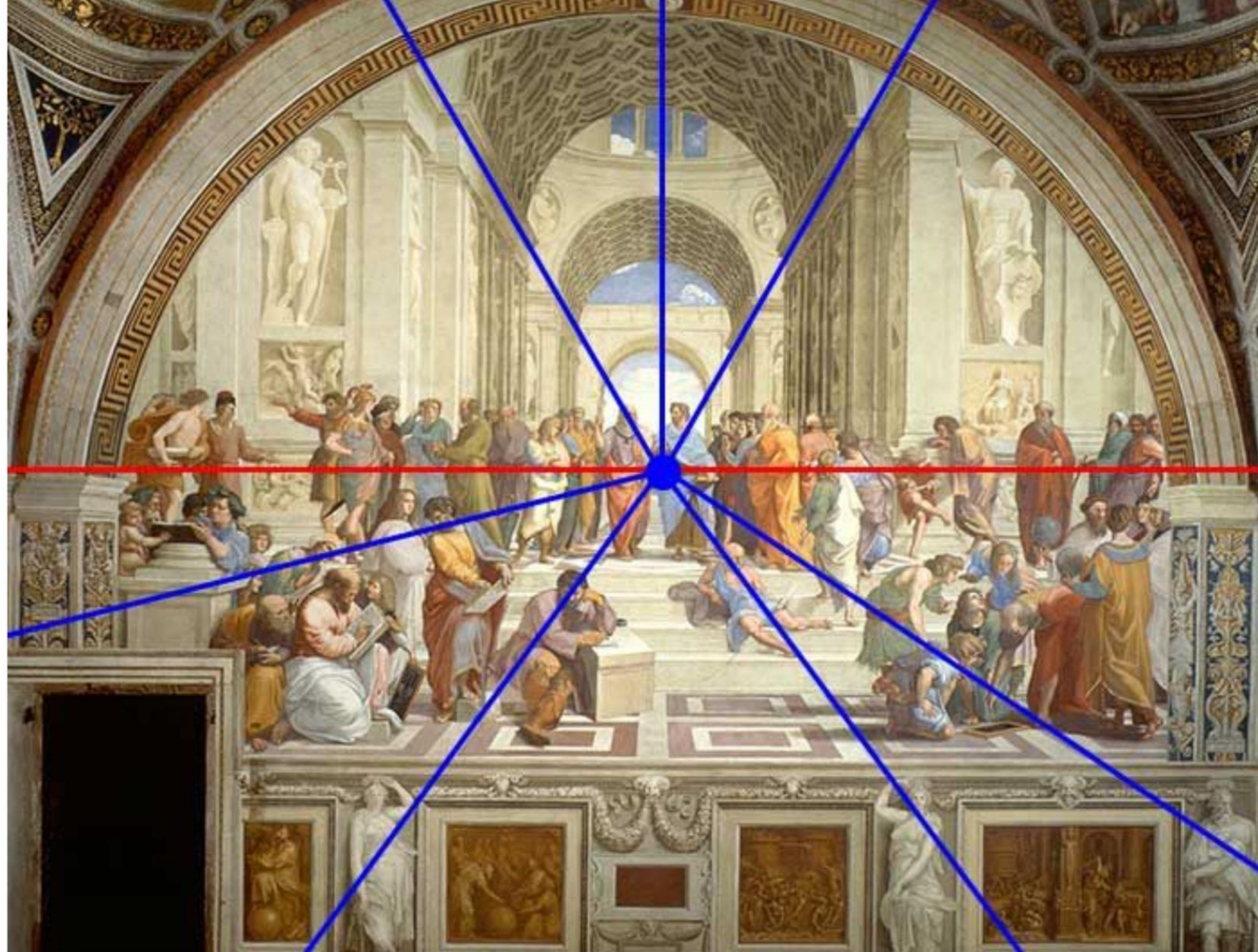


One point perspective



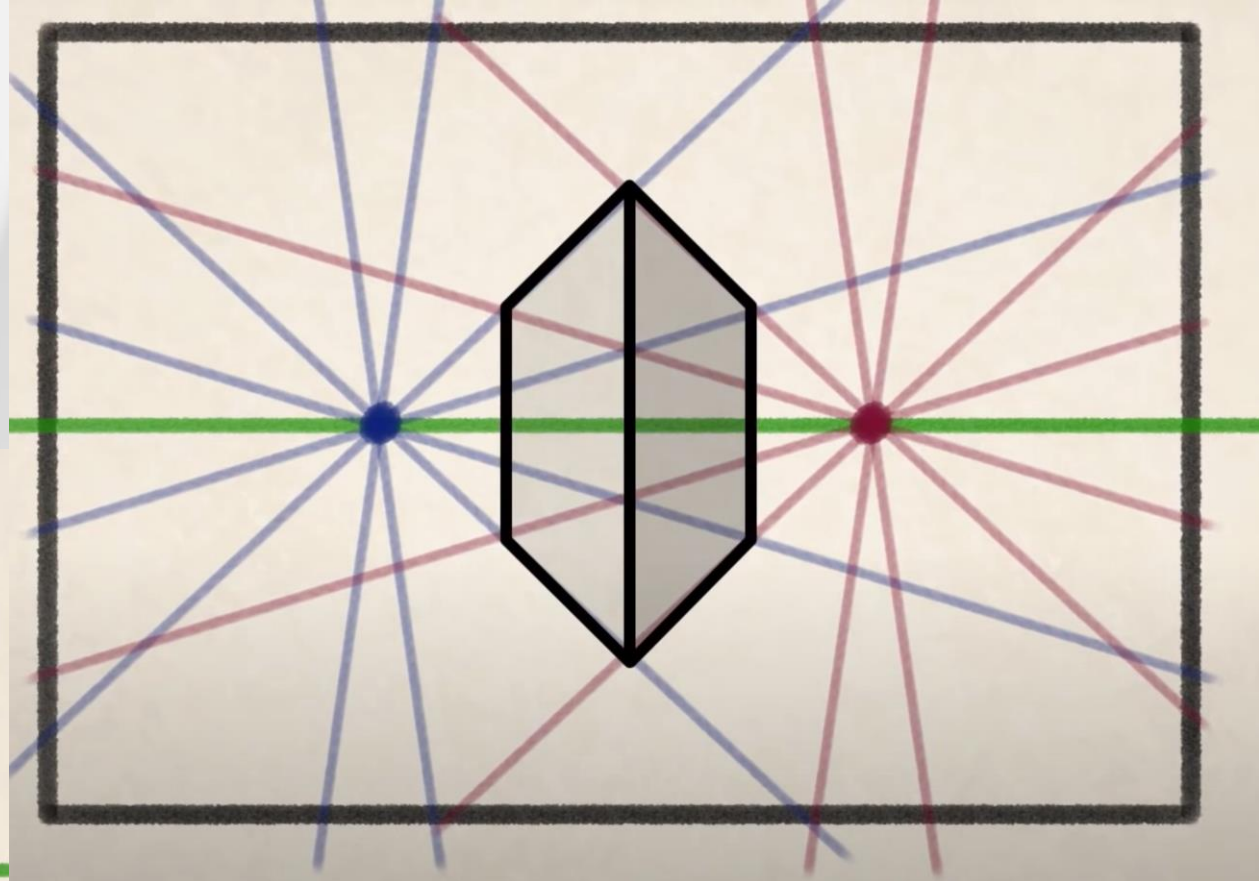
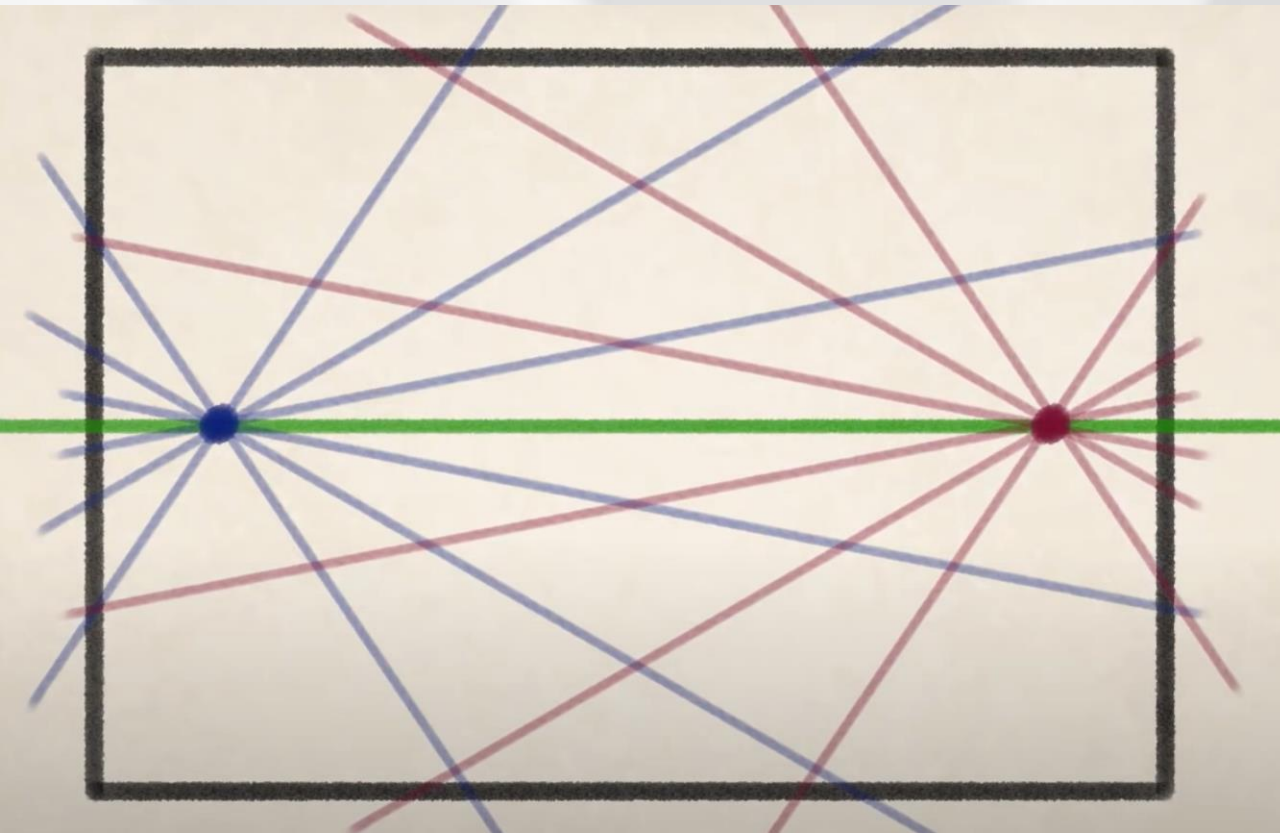


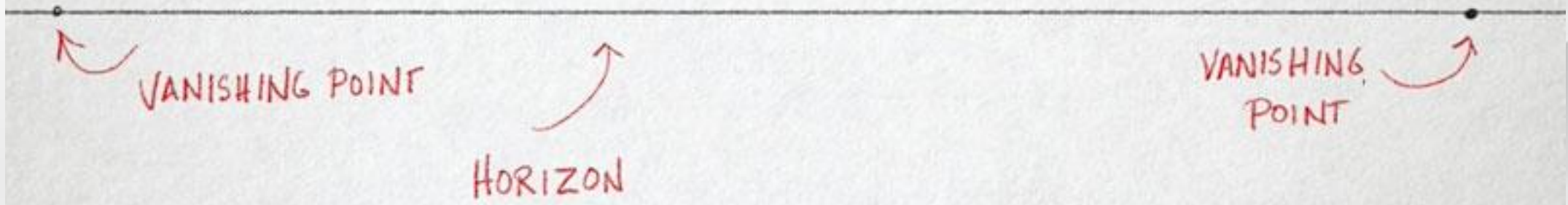
School of Athens, fresco (1508–11) painted by artist Raphael, in the Stanza della Segnatura, a room in Pope Julius II's private apartments in the Vatican.



School of Athens, fresco (1508–11) painted by artist Raphael, in the Stanza della Segnatura, a room in Pope Julius II's private apartments in the Vatican.

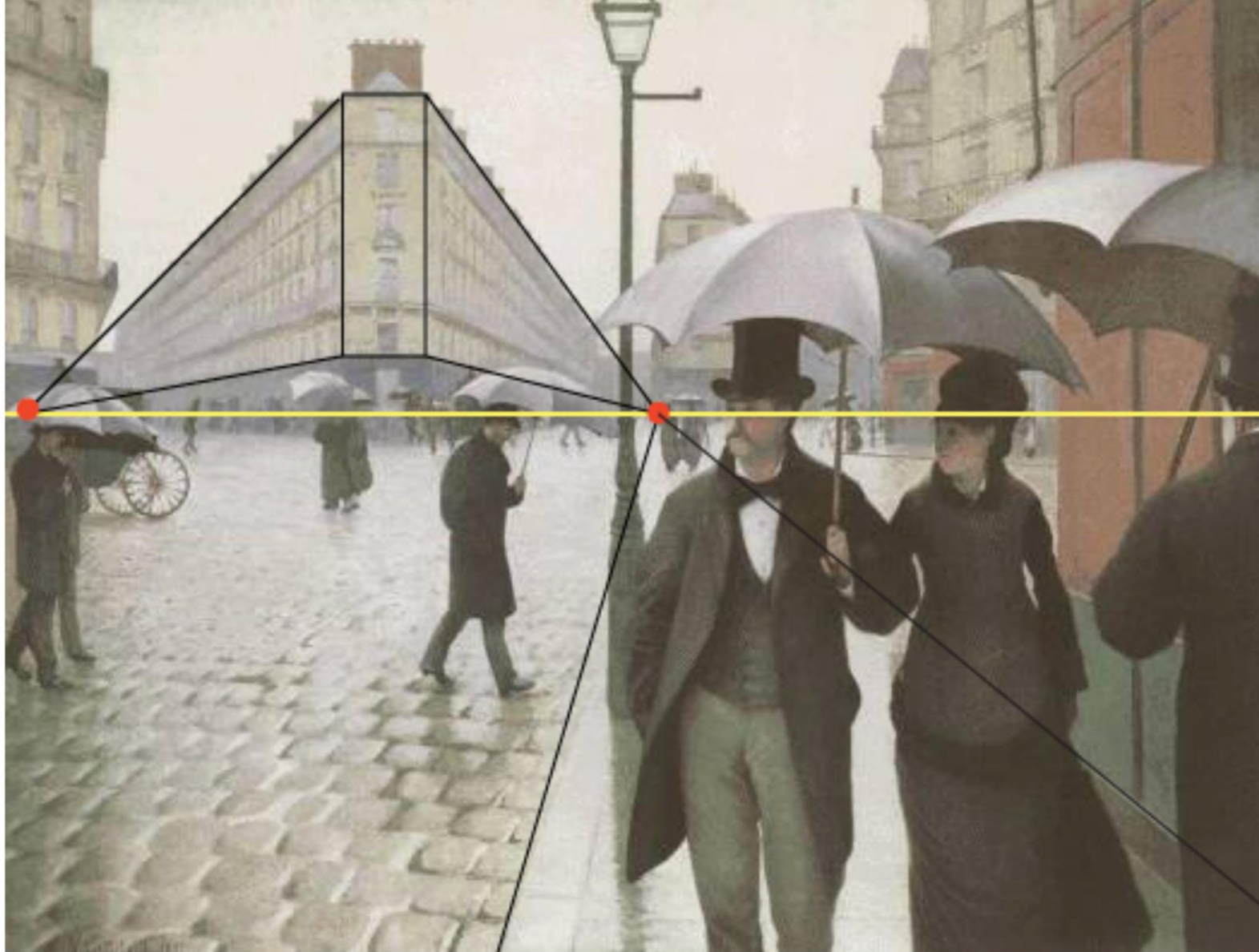
Two point perspective







Gustave Caillebotte, Paris Street; Rainy Day, 1877, oil on canvas



Gustave Caillebotte, Paris Street; Rainy Day, 1877, oil on canvas

MATERIALS

GRAPHITE PENCIL DRAWINGS





Antoine Watteau, *trois crayons*
technique



Raphael, study for what
became the *Alba Madonna*,
with other sketches





Photorealism

VOCABULARY OF ART TERMS

Element & Principle Terminology

2-d - (two-dimensional) flat shapes, only have height and width

3-d - (three-dimensional) forms, have height, width and depth

Abstract Shape - distorts an natural shape

Color Wheel - the representation of all the colors and how they fit together, shows how primary colors work together to create secondaries and so on

Contour - outline of a shape, type of drawing style

Contrast - difference, usually a difference between light and dark

Curved - refers to lines and shapes, uses semi-circular patterns

Depth - the perception of space

Diagonal - refers to a direction, an angled line of any degree

Geometric Shape - man-made, sharp edges

Horizontal - refers to a direction, flat like the horizon line

Hue - the name of a color

Implied - type of line where the eye completes the unfinished line in a shape

Length - how tall something is

Modeled - shading technique that makes the shape look 3-D

Monochromatic - a color scheme that uses just the variations of one color, the lights (tints) and darks (shades)

Natural Shape - organic shapes, inspired by or comes from nature

Negative - the space around an object

- photography tool, processed film from which photos are developed

Pattern Ñ something that repeats

- image that is copied

Perspective - technique used to show depth

Positive - the space an object takes up

Sphere - a ball or 3-d circle